

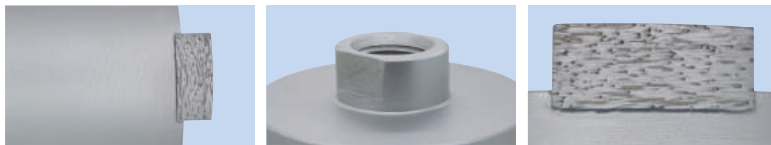
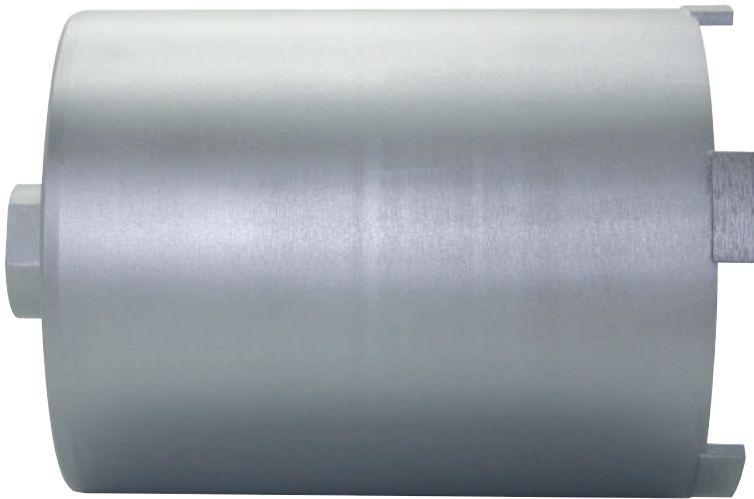
**DCX90 DRY CORE DRILLS - SOLID BARREL**

The DCX90 range of dry core drills offer fast drilling speeds and all round performance in masonry building materials due to the high quality diamond segments and welded barrels.

Solid barrel dry core drills should only be used with an adequate dust extraction system; core drills used in this way can drill in excess of 300% faster than their slotted equivalents. Mexco dry core drills should be used in conjunction with a minimum 850W+ drill motor fitted with a slipping clutch.

**KEY FEATURES**

- High Quality Steel Barrels
- 1/2" BSP Female Backend
- High Diamond Concentration



High quality steel barrel

1/2" BSP female fitment

High diamond concentration

**PRODUCT OVERVIEW:**

**Grade:** X90

**Segment Height:** 10mm

**Segment Attachment:** Brazed

**Dry/Wet:** Dry

**Segment Type:** Flat Curve

**Barrell Type:** Solid



**LOW WEAR RATE**

The X90 range of products allow a broad range of cutting applications and will provide fast cutting characteristics combined with low wear rates and an excellent lifetime.



**PRODUCT DATA SHEET**

**DIAMETERS AVAILABLE:**

Code	Diameter (mm)	Length (mm)
A10DC22US	22	400
A10DC28US	28	400
A10DC32US	32	400
A10DC38US	38	165
A10DC48US	48	165
A10DC52US	52	165
A10DC65US	65	165
A10DC78US	78	165
A10DC82US	82	165
A10DC91US	91	165
A10DC102US	102	165
A10DC107US	107	165
A10DC117US	117	165
A10DC127US	127	165
A10DC152US	152	165
A10DC162US	162	165

**SUITABLE FOR USE ON:**

CORE DRILL MACHINES IN ACCORDANCE WITH MANUFACTURERS HANDBOOK



**APPLICATION:**

- Medium Soft Facing Brick
- Concrete Blocks
- Hard Sandstone
- Coarse Sandstone
- Soft Slate
- Breeze Block
- Lignacite Blocks



Brick



Soft Stone



Concrete Block

● **RECOMMENDED** to cut these materials

● **Will cut these materials** with the possibility of reduced lifetime / glazing

**PRODUCT DATA SHEET**